

FOR SALE



FOR SALE

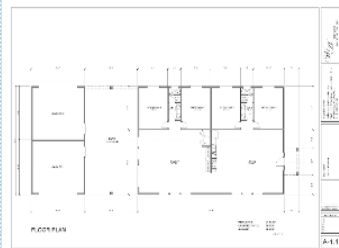
6378 Canyon Road , 29 Palms, CA 92277

MLS:PW24152959 PRICE:\$35,000.00



PROPERTY DESCRIPTION:

Desert Oasis This lot is approximately 1/2 an acre. It has preliminary plans for 2,440 Sq ft. home with 4 car garages, by architect Keith Wismer. The lot location has many fully constructed homes nearby. 8 miles west on 29 Palms Hwy is Joshua Tree national park. Many restaurants, shopping centers, casinos, theaters, and churches. Close to San Bernardino County offices and highway Patrol. Copper mountain college, high schools & Elementary schools are highly rated. Marine corps air ground combat center approximately 8 miles east on 29 palms Hwy.



[FIND MORE](#)

[VIEW PDF](#)

[SEND TO CLIENTS](#)



John Ybarra
Ybarra Realtors
Phone: 714.525.1818
Mobile: 714.313.9739
DRE#: 00602149
ybarrarealtors@gmail.com

**JOHN LEWIS
YBARRA
Realtors**



All information deemed reliable but not guaranteed.